

## Raman LIDAR at CRLF

Raman LIDAR runs for the FD shift period.

- before FD shift 12 min
- during FD shift 12 min
- after FD shift 12 min

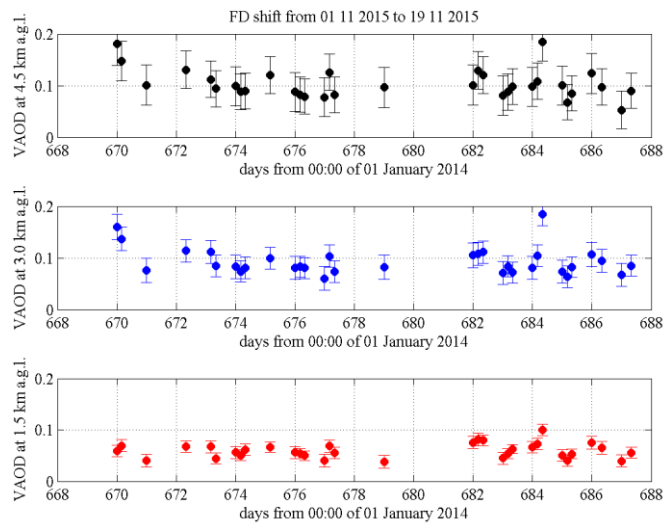
Raman LIDAR STATUS.

- active channels: AIR, Raman N<sub>2</sub>, Raman H<sub>2</sub>O.

Raman LIDAR performances.

- useful profiles of:
  - VAOD (vertical aerosol optical depth) = 33 of 57
  - aerosol backscatter coefficient = 33 of 57
  - H<sub>2</sub>O mixing ratio = 33 of 57
- UNuseful profiles due to:
  - software/hardware problems = 5
  - precipitation and/or low clouds = 19

Timeseries of VAOD values and corresponding errors at 1.5±0.3, 3.0±0.3 and 4.5±0.3 km above ground level.



Histograms of VAOD values at 1.5±0.3, 3.0±0.3 and 4.5±0.3 km above ground level.

