

Raman LIDAR at CRLF

Raman LIDAR runs for the FD shift period.

- before FD shift 12 min
- during FD shift 12 min
- after FD shift 12 min

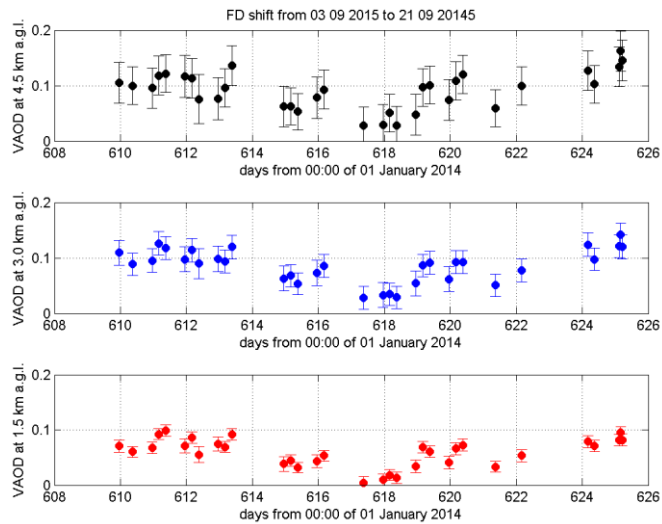
Raman LIDAR STATUS.

- active channels: AIR, Raman N₂, Raman H₂O.

Raman LIDAR performances.

- useful profiles of:
 - VAOD (vertical aerosol optical depth) = 33 of 56+10longruns
 - aerosol backscatter coefficient = 33 of 56+10longruns
 - H₂O mixing ratio = 33 of 56+10longruns
- UNuseful profiles due to:
 - software/hardware problems = 10
 - precipitation and/or low clouds = 23

Timeseries of VAOD values and corresponding errors at 1.5 ± 0.3 , 3.0 ± 0.3 and 4.5 ± 0.3 km above ground level.



Histograms of VAOD values at 1.5 ± 0.3 , 3.0 ± 0.3 and 4.5 ± 0.3 km above ground level.

