

Raman LIDAR at CRLF

Raman LIDAR runs for the FD shift period.

- before FD shift 12 min
- during FD shift 12 min
- after FD shift 12 min

Raman LIDAR STATUS.

- active channels: AIR, Raman N2, Raman H2O.

Raman LIDAR performances.

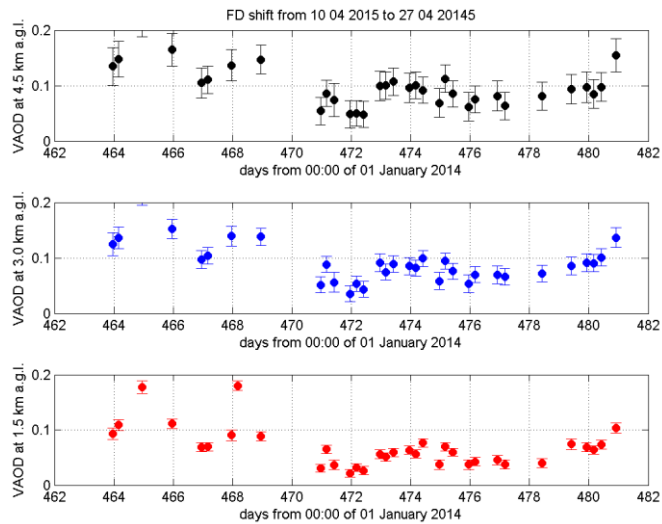
- useful profiles of:

- VAOD (vertical aerosol optical depth) = 34 of 53
- aerosol backscatter coefficient = 34 of 53
- H2O mixing ratio = 34 of 53

- UNuseful profiles due to:

- software/hardware problems = 10
- precipitation and/or low clouds = 9

Timeseries of VAOD values and corresponding errors at 1.5 ± 0.3 , 3.0 ± 0.3 and 4.5 ± 0.3 km above ground level.



Histograms of VAOD values at 1.5 ± 0.3 , 3.0 ± 0.3 and 4.5 ± 0.3 km above ground level.

