

## Raman LIDAR at CRLF

Raman LIDAR runs for the FD shift period.

- before FD shift 24 min
- after FD shift 12 min

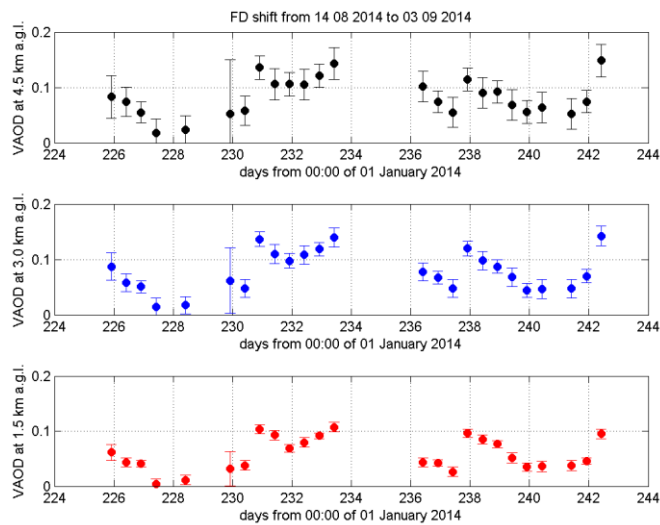
Raman LIDAR STATUS.

- active channels: AIR, Raman N<sub>2</sub>, Raman H<sub>2</sub>O.

Raman LIDAR performances.

- useful profiles of:
  - VAOD (vertical aerosol optical depth) = 25 of 41
  - aerosol backscatter coefficient = 25 of 41
  - H<sub>2</sub>O mixing ratio = 25 of 41
- UNuseful profiles due to:
  - software/hardware problems = 8
  - precipitation and/or low clouds = 8

Timeseries of VAOD values and corresponding errors at 1.5±0.3, 3.0±0.3 and 4.5±0.3 km above ground level.



Histograms of VAOD values at 1.5±0.3, 3.0±0.3 and 4.5±0.3 km above ground level.

