

Raman LIDAR at CRLF

Raman LIDAR runs for the FD shift period.

- before FD shift 24 min

- after FD shift 12 min

Raman LIDAR STATUS.

- active channels: AIR, Raman N₂, Raman H₂O.

Raman LIDAR performances.

- useful profiles of:

- VAOD (vertical aerosol optical depth) = 21 of 39

- aerosol backscatter coefficient = 21 of 39

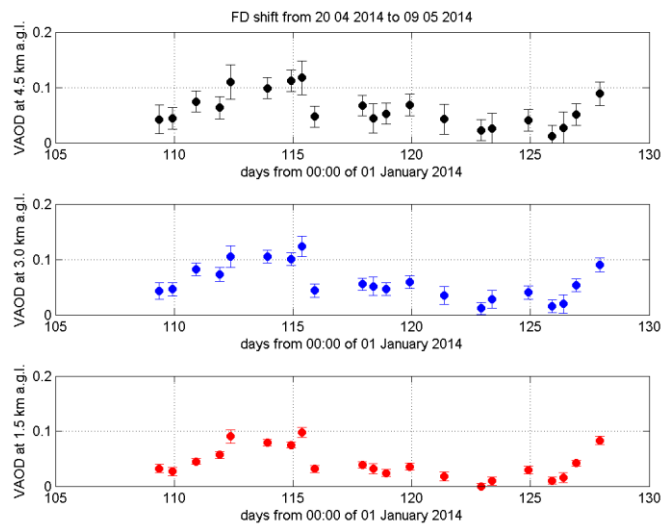
- H₂O mixing ratio = 21 of 39

- UNuseful profiles due to:

- software/hardware problems = 0

- precipitation and/or low clouds = 18

Timeseries of VAOD values and corresponding errors at 1.5 ± 0.3 , 3.0 ± 0.3 and 4.5 ± 0.3 km above ground level.



Histograms of VAOD values at 1.5 ± 0.3 , 3.0 ± 0.3 and 4.5 ± 0.3 km above ground level.

