

## Raman LIDAR at CRLF

Raman LIDAR runs for the FD shift period.

- before FD shift 24 min

- after FD shift 12 min

Raman LIDAR STATUS.

- active channels: AIR, Raman N2, Raman H2O.

Raman LIDAR performances.

- useful profiles of:

- VAOD (vertical aerosol optical depth) = 11 of 35

- aerosol backscatter coefficient = 11 of 35

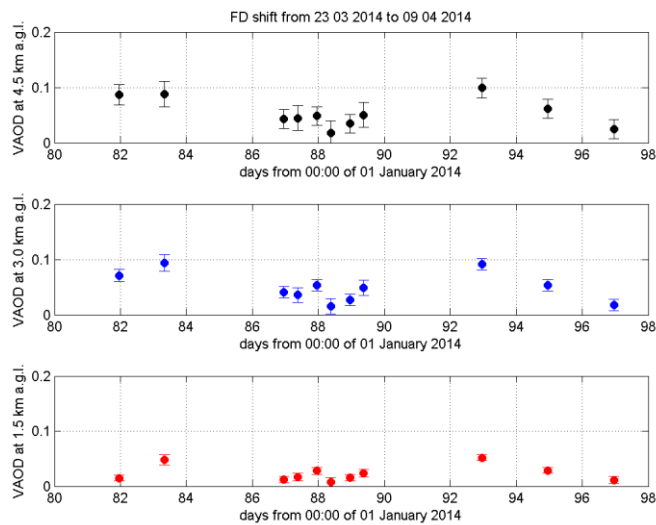
- H2O mixing ratio = 11 of 33

- UNuseful profiles due to:

- software/hardware problems = 17

- precipitation and/or low clouds = 7

Timeseries of VAOD values and corresponding errors at  $1.5\pm 0.3$ ,  $3.0\pm 0.3$  and  $4.5\pm 0.3$  km above ground level.



Histograms of VAOD values at  $1.5\pm 0.3$ ,  $3.0\pm 0.3$  and  $4.5\pm 0.3$  km above ground level.

